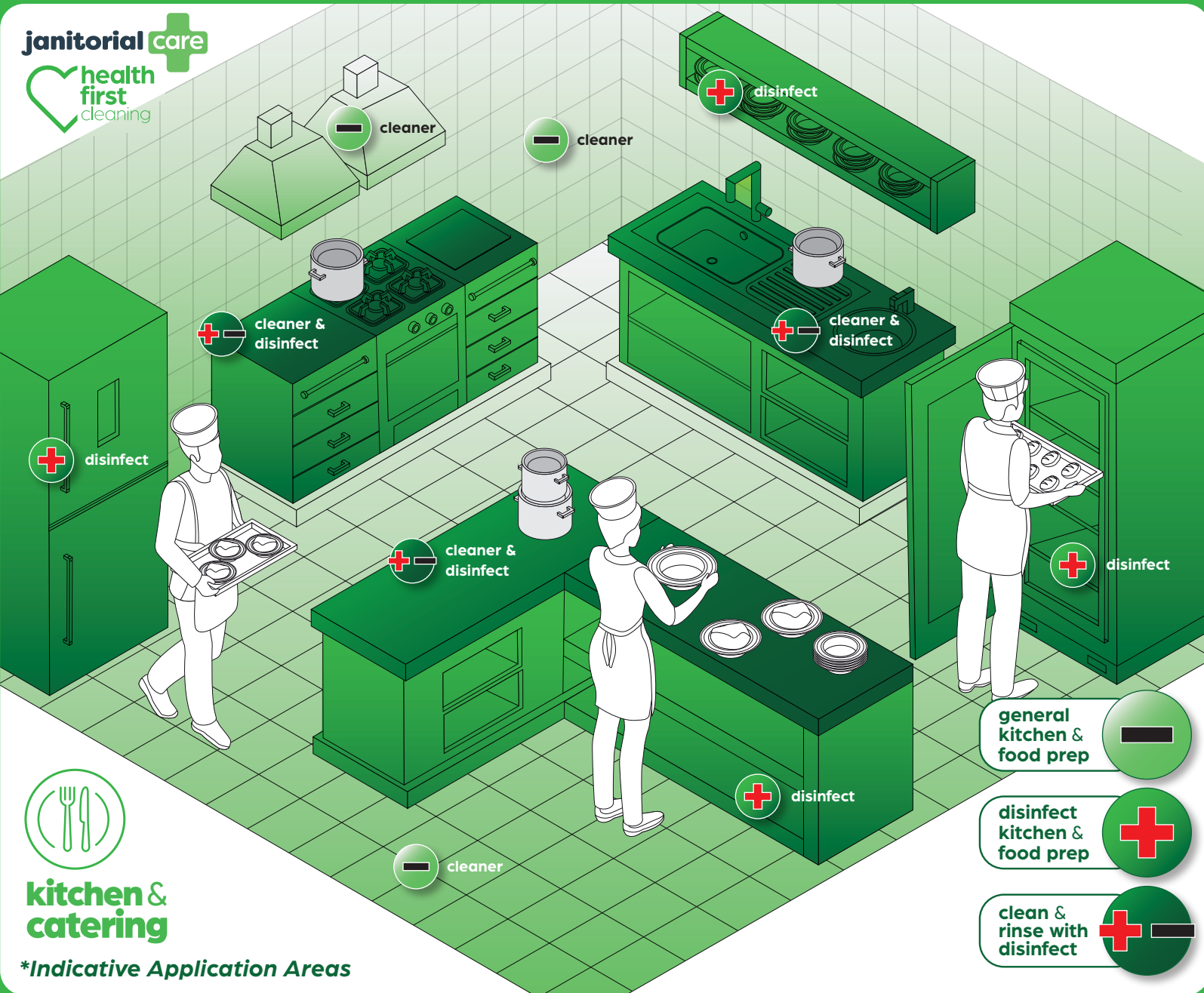




# Kitchen & catering hygiene plan

for use with **Disinfect kitchen & food prep area** & **Cleaner kitchen & food prep area**



**kitchen & catering**

**\*Indicative Application Areas**

### Refill & Usage Instructions:

Please consult the Usage & Dilution Chart before use. If refilling an applicator, we **do not** recommend rinsing before refilling. Always use original Dew product bottles.

### cleaner kitchen & food prep area

cleaner

#### Shake well before refilling and use.

Apply liberally onto the surface to be treated (including your hands if required), allow some dissolving action (usually 2-3 minutes), wipe with an absorbent cloth or rinse away with clean, fresh water. Very thick deposits may require agitation and/or more than one application.

Can be applied using most commercial/industrial cleaning systems, or simply with a mop, cloth or sponge.

### disinfect kitchen & food prep area



For work surfaces, apply liberally then, wait for at least 2 minutes, to ensure high quality disinfection. Wipe with an absorbent cloth, or leave to dry naturally. When used on food preparation surfaces, please follow the **FSA Regulations** and first clean with **Dew Kitchen & Food Prep Area Cleaner**. Can be used anywhere in kitchen or food prep areas. Can be safely used as an **Antiseptic wound wash**.

**Storage & Safety:** Store at room temperature in a cool, dry place. Protect from direct sunlight. Best used within 6 months of opening.

Dew is not harmful to health, when used as directed, there is no requirement for PPE or COSHH (Control of Substances Hazardous to Health). For external use only, do not consume. Keep out of reach of children. If product gets into eyes, wash thoroughly with water. In the unlikely event that irritation occurs, get medical advice/attention.

**Use biocides safely. Always read the label and product information before use. For professional use only. Safety Data Sheet available upon request.**

All Dew Cleaning Products are manufactured in compliance with the relevant UK/EU Regulations. All Dew Disinfection Products have been successfully tested to the following UK/EU testing protocols - BS EN 1499, BS EN 1500, BS EN 1650, BS EN 13623, BS EN 13697, BS EN 14476, BS EN 901, BS EN 1276. The active ingredient is listed under Article 95 of the UK/EU biocide regulation for Product Types 1 to 5.

#### Disclaimer:

The information shown in the diagram is provided by way of general guidance only. Any party making any use thereof or placing any reliance thereon shall do so only upon exercise of that party's own judgement as to the adequacy of the information, in the particular circumstances of its use and application. No warranty is given as to the accuracy, relevance or completeness shown and Ecoanolytes Ltd. shall have no responsibility for any errors in or omissions there from, or any use made of, or reliance placed upon, any of the information shown.

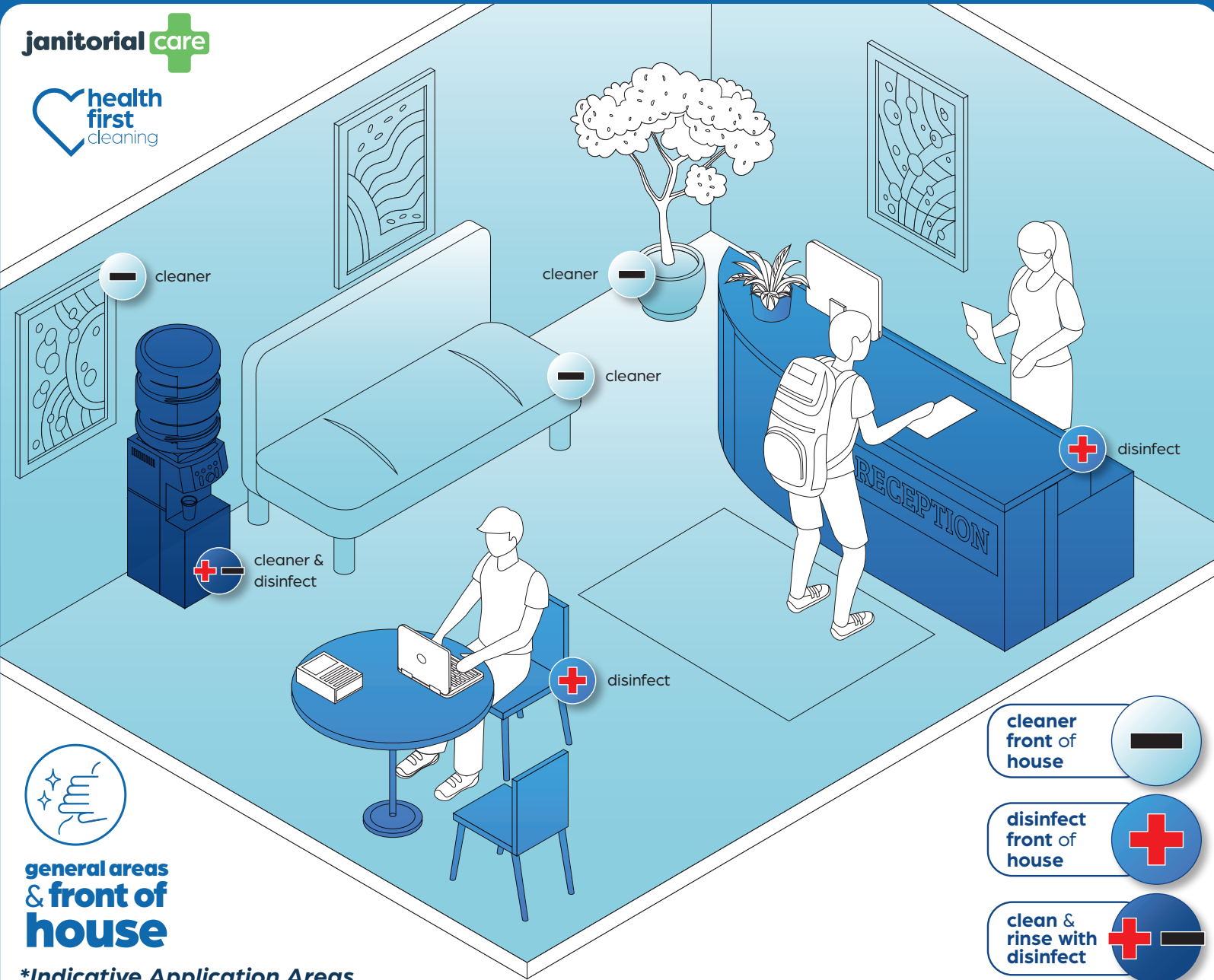
Ecoanolytes Ltd. Units 1-4,  
Block 7b Nobel Road, Dundee DD2 4UH  
**dewproducts.com**

info@dewproducts.com | +44 (0) 1382 293436



# front of house hygiene plan

for use with **Disinfect front of house** & **Cleaner front of house**



**general areas  
& front of  
house**

**\*Indicative Application Areas**

**cleaner  
front of  
house**



**disinfect  
front of  
house**



**clean &  
rinse with  
disinfect**



### Refill & Usage Instructions:

Please consult the Usage & Dilution Chart before use. If refilling an applicator, we **do not** recommend rinsing before refilling. Always use original Dew product bottles.

**cleaner  
front of  
house**

**cleaner**

### Shake well before refilling and use.

Apply liberally onto the surface to be treated (including your hands if required), allow some dissolving action (usually 2-3 minutes), wipe with an absorbent cloth or rinse away with clean, fresh water. Very thick deposits may require agitation and/or more than one application.

Can be applied using most commercial/industrial cleaning systems, or simply with a mop, cloth or sponge.

**disinfect  
front of  
house**



For general front of house surfaces, apply liberally. To ensure high quality disinfection, wait for at least 2 minutes, before wiping with absorbent cloth, or leave to dry naturally.

**Can be used anywhere in general areas and front of house. Can be safely used as an Antiseptic wound wash.**

**Storage & Safety:** Store at room temperature in a cool, dry place. Protect from direct sunlight. Best used within 6 months of opening.

Dew is not harmful to health, when used as directed, there is no requirement for PPE or COSHH (Control of Substances Hazardous to Health). For external use only, do not consume. Keep out of reach of children. If product gets into eyes, wash thoroughly with water. In the unlikely event that irritation occurs, get medical advice/attention.

**Use biocides safely. Always read the label and product information before use. For professional use only. Safety Data Sheet available upon request.**

All Dew Cleaning Products are manufactured in compliance with the relevant UK/EU Regulations. All Dew Disinfection Products have been successfully tested to the following UK/EU testing protocols - BS EN 1499, BS EN 1500, BS EN 1650, BS EN 13623, BS EN 13697, BS EN 14476, BS EN 901, BS EN 1276. The active ingredient is listed under Article 95 of the UK/EU biocide regulation for Product Types 1 to 5.

### Disclaimer:

The information shown in the diagram is provided by way of general guidance only. Any party making any use thereof or placing any reliance thereon shall do so only upon exercise of that party's own judgement as to the adequacy of the information, in the particular circumstances of its use and application. No warranty is given as to the accuracy, relevance or completeness shown and Ecoanolytes Ltd. shall have no responsibility for any errors in or omissions there from, or any use made of, or reliance placed upon, any of the information shown.

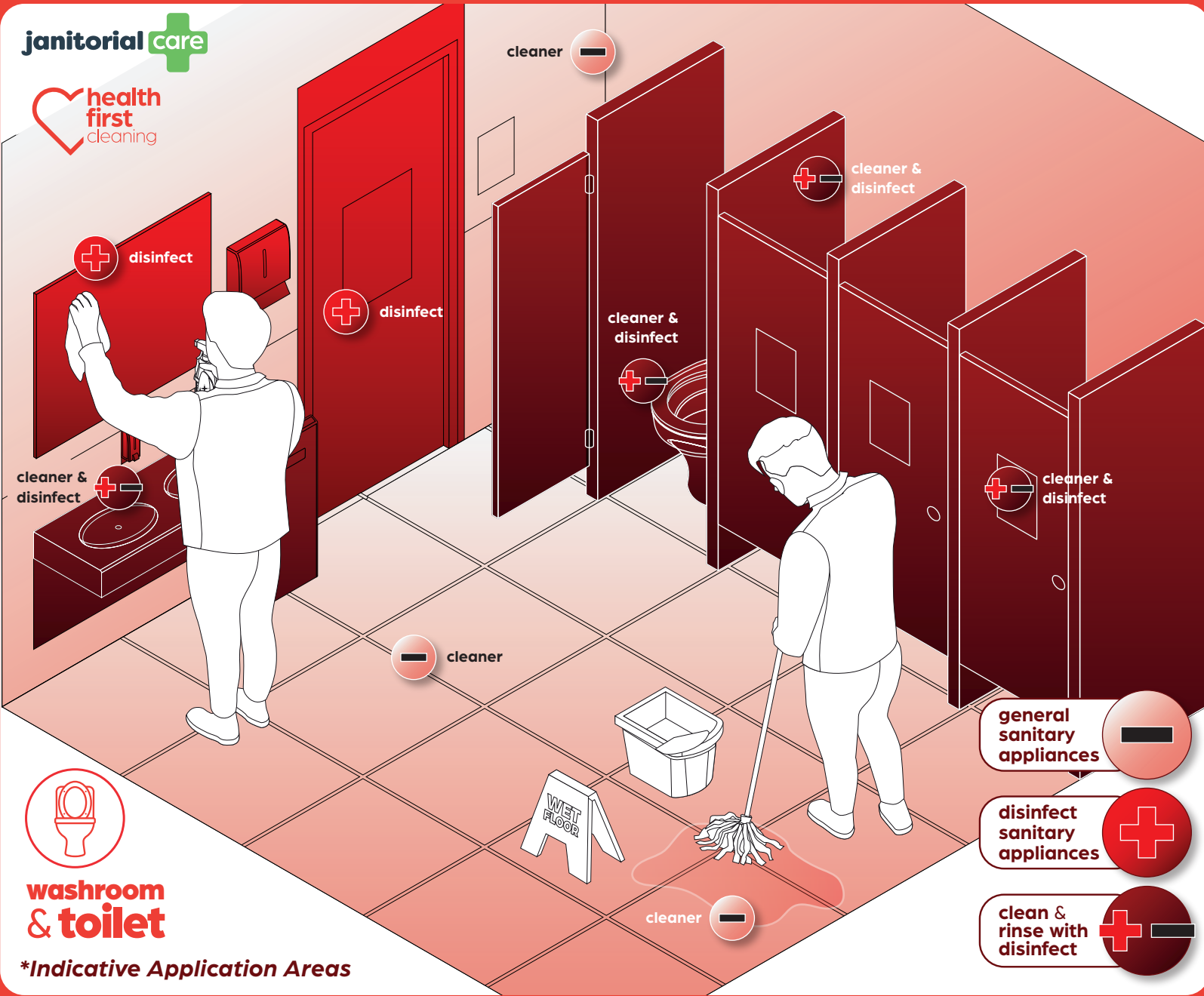
Ecoanolytes Ltd. Units 1-4,  
Block 7b Nobel Road, Dundee DD2 4UH  
**dewproducts.com**

info@dewproducts.com | +44 (0) 1382 293436



# Washroom & toilet hygiene plan

for use with **Disinfect Sanitary Appliances & Cleaner Sanitary Appliances**



**washroom & toilet**

**\*Indicative Application Areas**

### Refill & Usage Instructions:

Please consult the Usage & Dilution Chart before use. If refilling an applicator, we **do not** recommend rinsing before refilling. Always use original Dew product bottles.

### cleaner sanitary appliances

cleaner

#### Shake well before refilling and use.

Apply liberally onto the surface to be treated (including your hands if required), allow some dissolving action (usually 2-3 minutes), wipe with an absorbent cloth or rinse away with clean, fresh water. Very thick deposits may require agitation and/or more than one application.

Can be applied using most commercial/industrial cleaning systems, or simply with a mop, cloth or sponge.

### disinfect sanitary appliances

disinfect

**Sinks & Drains:** Direct down waste/ pipe to keep germ and odour free.

**Toilets & Urinals:** Direct around the bowl/ urinal, for a germ and odour free toilet.

**Can be used anywhere in a washroom and toilet environment, including floors, tiles, door handles etc. Can be safely used as an Antiseptic wound wash.**

**Storage & Safety:** Store at room temperature in a cool, dry place. Protect from direct sunlight. Best used within 6 months of opening.

Dew is not harmful to health, when used as directed, there is no requirement for PPE or COSHH (Control of Substances Hazardous to Health). For external use only, do not consume. Keep out of reach of children. If product gets into eyes, wash thoroughly with water. In the unlikely event that irritation occurs, get medical advice/attention.

**Use biocides safely. Always read the label and product information before use. For professional use only. Safety Data Sheet available upon request.**

All Dew Cleaning Products are manufactured in compliance with the relevant UK/EU Regulations. All Dew Disinfection Products have been successfully tested to the following UK/EU testing protocols - BS EN 1499, BS EN 1500, BS EN 1650, BS EN 13623, BS EN 13697, BS EN 14476, BS EN 901, BS EN 1276. The active ingredient is listed under Article 95 of the UK/EU biocide regulation for Product Types 1 to 5.

#### Disclaimer:

The information shown in the diagram is provided by way of general guidance only. Any party making any use thereof or placing any reliance thereon shall do so only upon exercise of that party's own judgement as to the adequacy of the information, in the particular circumstances of its use and application. No warranty is given as to the accuracy, relevance or completeness shown and Ecoanolytes Ltd. shall have no responsibility for any errors in or omissions there from, or any use made of, or reliance placed upon, any of the information shown.

Ecoanolytes Ltd. Units 1-4,  
Block 7b Nobel Road, Dundee DD2 4UH  
[dewproducts.com](http://dewproducts.com)  
[info@dewproducts.com](mailto:info@dewproducts.com) | +44 (0) 1382 293436

general  
sanitary  
appliances

disinfect  
sanitary  
appliances

clean &  
rinse with  
disinfect



# Medical & Care hygiene plan

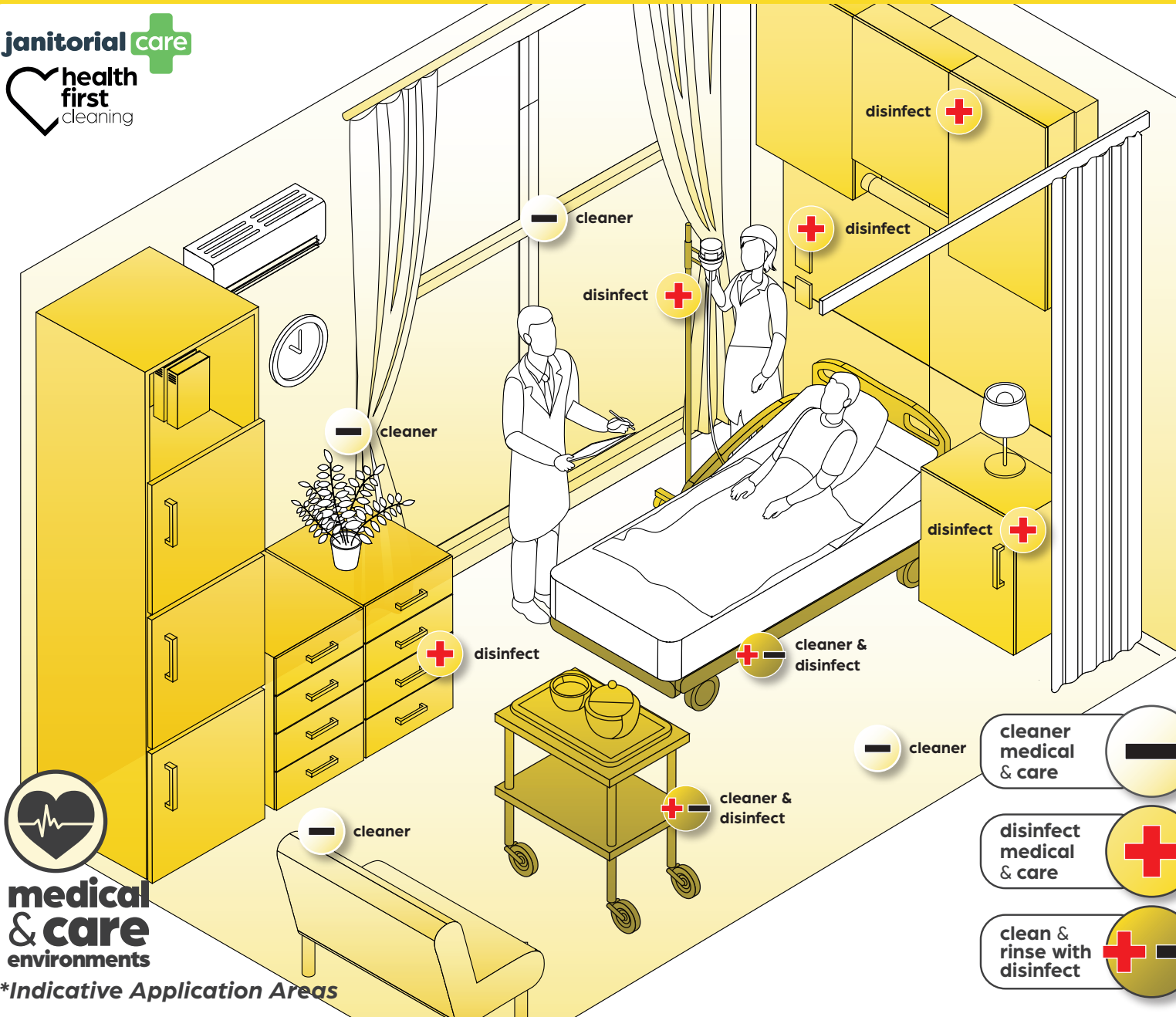
for use with **Disinfect medical & care** & **Cleaner medical & care**

janitorial **care**



**medical & care environments**

**\*Indicative Application Areas**



**cleaner medical & care**

**disinfect medical & care**

**clean & rinse with disinfect**

## Refill & Usage Instructions:

Please consult the Usage & Dilution Chart before use. If refilling an applicator, we **do not** recommend rinsing before refilling. Always use original Dew product bottles.

## cleaner medical & care

**cleaner**

### Shake well before refilling and use.

Apply liberally onto the surface to be treated (including your hands if required), allow some dissolving action (usually 2-3 minutes), wipe with an absorbent cloth or rinse away with clean, fresh water. Very thick deposits may require agitation and/or more than one application.

Can be applied using most commercial/industrial cleaning systems, or simply with a mop, cloth or sponge.

## disinfect medical & care



For most surfaces, apply liberally then, wait for at least 2 minutes, to ensure high quality disinfection. Wipe with an absorbent cloth, or leave to dry naturally. When used on food preparation surfaces, please follow the **FSA Regulations** and first clean with **Dew Kitchen & Food Prep Area Cleaner**.

**If used on soft furnishings, bedding etc. do not over wet. Trial on a small area first.**

**In an emergency, can be safely used as an Antiseptic wound wash.**

**Storage & Safety:** Store at room temperature in a cool, dry place. Protect from direct sunlight. Best used within 6 months of opening.

Dew is not harmful to health, when used as directed, there is no requirement for PPE or COSHH (Control of Substances Hazardous to Health). For external use only, do not consume. Keep out of reach of children. If product gets into eyes, wash thoroughly with water. In the unlikely event that irritation occurs, get medical advice/attention.

**Use biocides safely. Always read the label and product information before use. For professional use only. Safety Data Sheet available upon request.**

All Dew Cleaning Products are manufactured in compliance with the relevant UK/EU Regulations. All Dew Disinfection Products have been successfully tested to the following UK/EU testing protocols - BS EN 1499, BS EN 1500, BS EN 1650, BS EN 13623, BS EN 13697, BS EN 14476, BS EN 901, BS EN 1276, BS EN 13624, BS EN 13727 & BS EN 14561. The active ingredient is listed under Article 95 of the UK/EU biocide regulation for Product Types 1 to 5.

### Disclaimer:

The information shown in the diagram is provided by way of general guidance only. Any party making any use thereof or placing any reliance thereon shall do so only upon exercise of that party's own judgement as to the adequacy of the information, in the particular circumstances of its use and application. No warranty is given as to the accuracy, relevance or completeness shown and Ecoanolytes Ltd. shall have no responsibility for any errors in or omissions there from, or any use made of, or reliance placed upon, any of the information shown.

Ecoanolytes Ltd. Units 1-4,  
Block 7b Nobel Road, Dundee DD2 4UH  
[dewproducts.com](http://dewproducts.com)  
[info@dewproducts.com](mailto:info@dewproducts.com) | +44 (0) 1382 293436